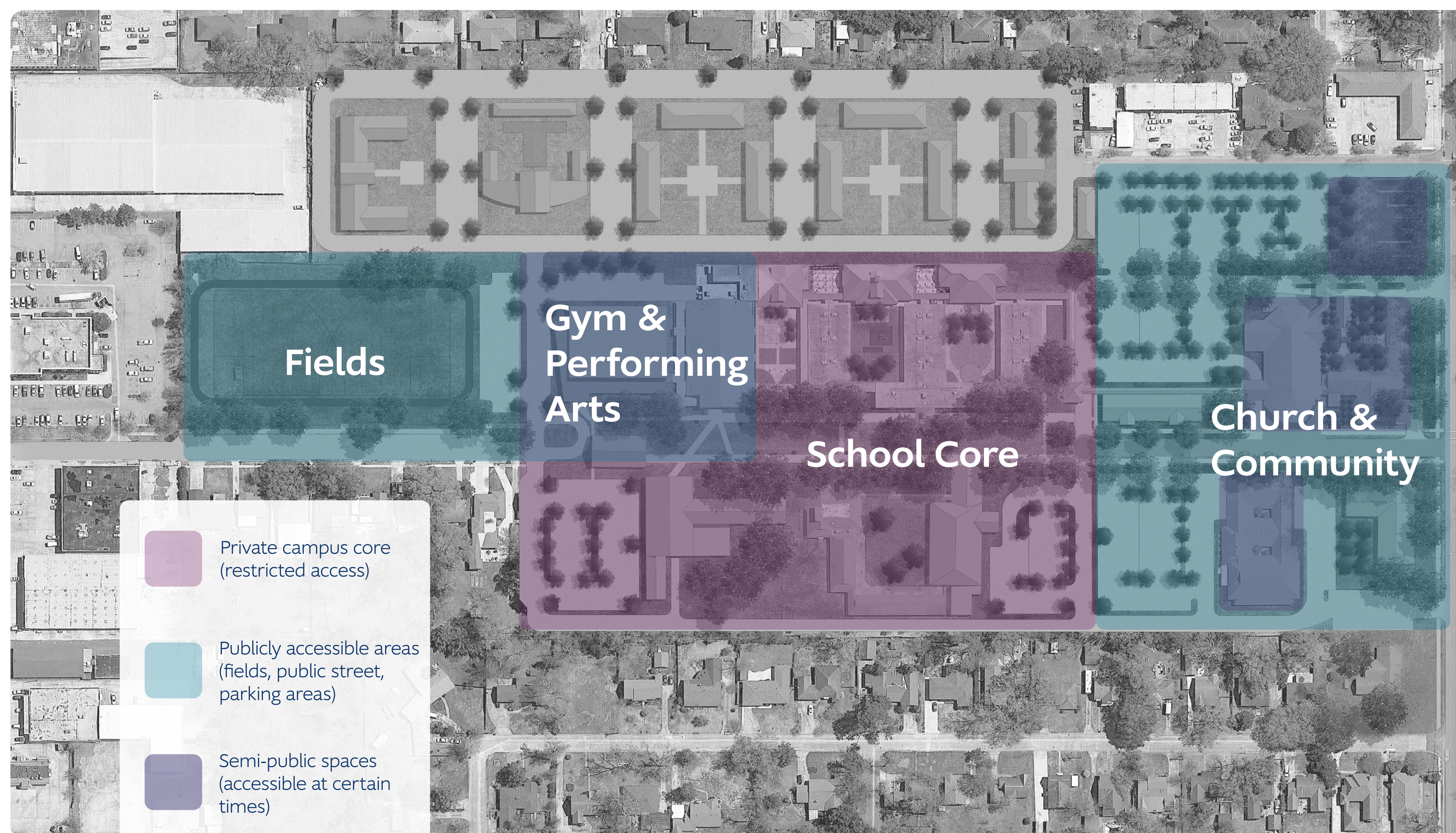


**SPACES FOR A VARIETY OF USES**



**PUBLIC VERSUS PRIVATE SPACES**

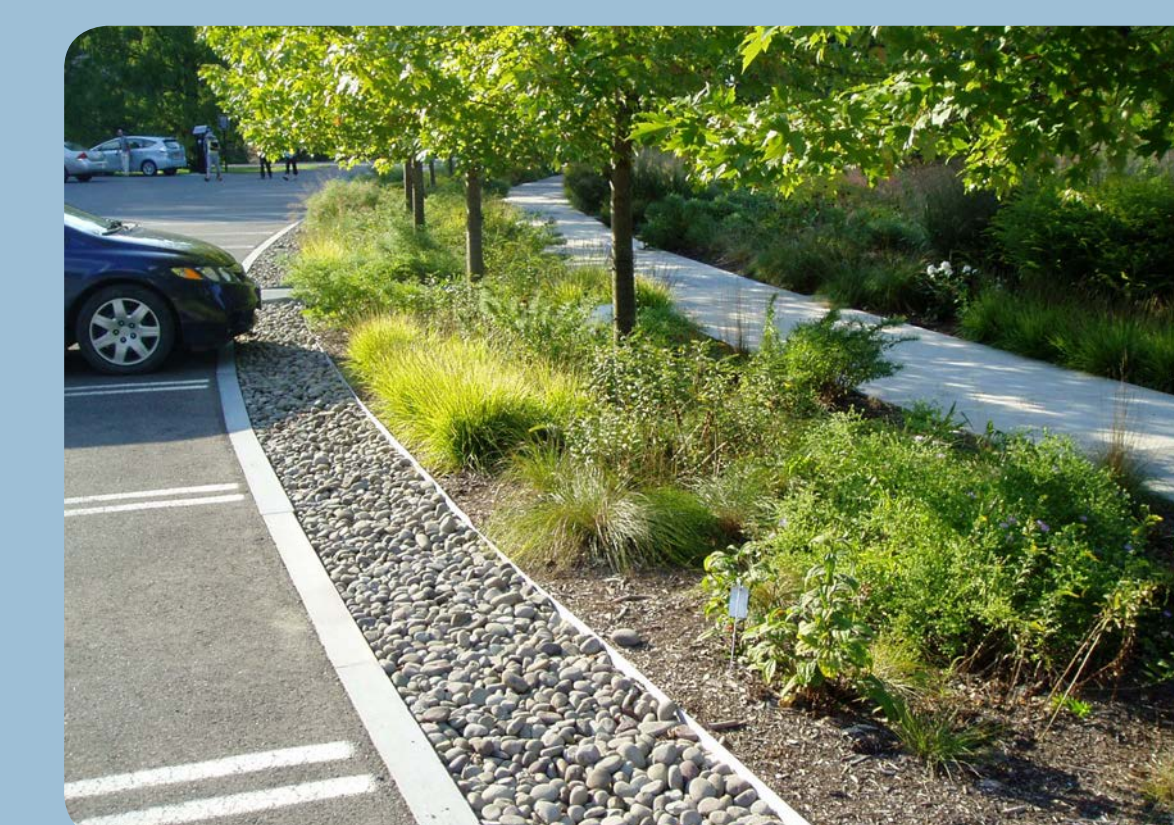
## CAMPUS OPEN SPACE

The Our Lady of Mercy campus master plan is tied together by a series of open spaces that serve various functions. Some spaces are utilitarian and designed to be functional, like athletic fields and parking lots. Other open spaces are meant for gathering, learning, playing, or praying. A large central green in the middle of campus provides space for large groups of people, and smaller courtyards and gardens are dedicated to quieter activities and smaller groups of people.

### OPEN SPACE AND LANDSCAPE CHARACTER



Open spaces between buildings can be utilized for gardens, gathering space, and outdoor classrooms.



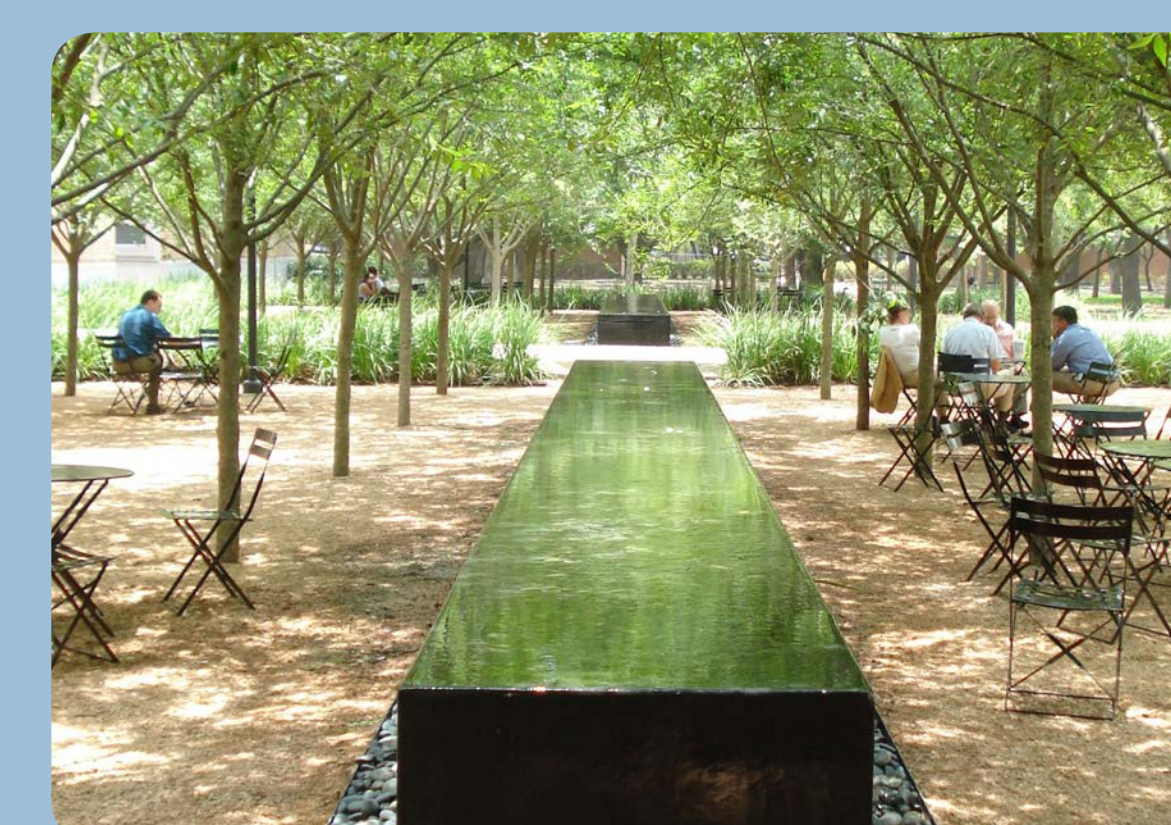
Parking lots should be well designed and shady. Trees and shrubs break up large parking areas.



Athletic fields are designed to accommodate multiple activities.



Parts of campus call for more formal courtyards and gathering spaces.



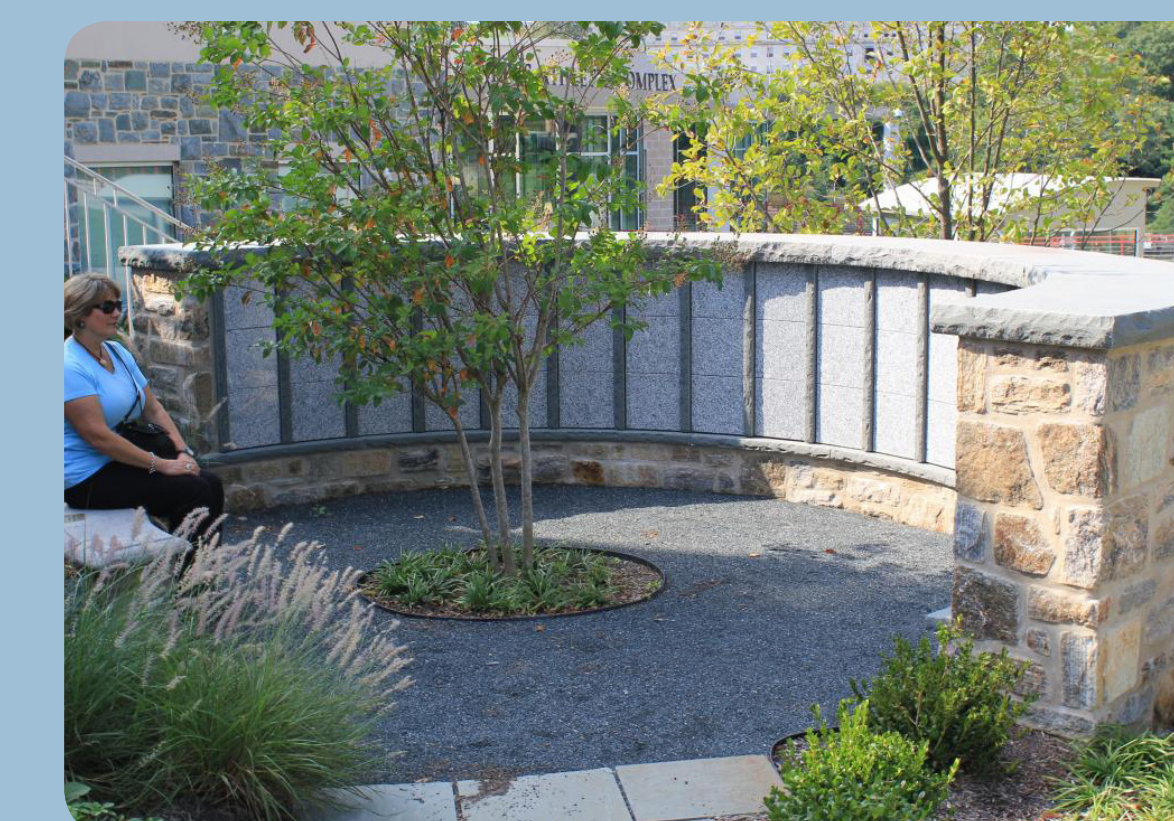
Prayer gardens and other quiet areas should be intimate, yet inviting.



Playgrounds are an opportunity to make stimulating and creative spaces for kids to learn and explore.



The campus is organized around a large central green that serves as a gathering space for the entire campus community.



Some spaces, like a columbarium, should be serene, private, and contemplative.



## VEHICULAR CIRCULATION

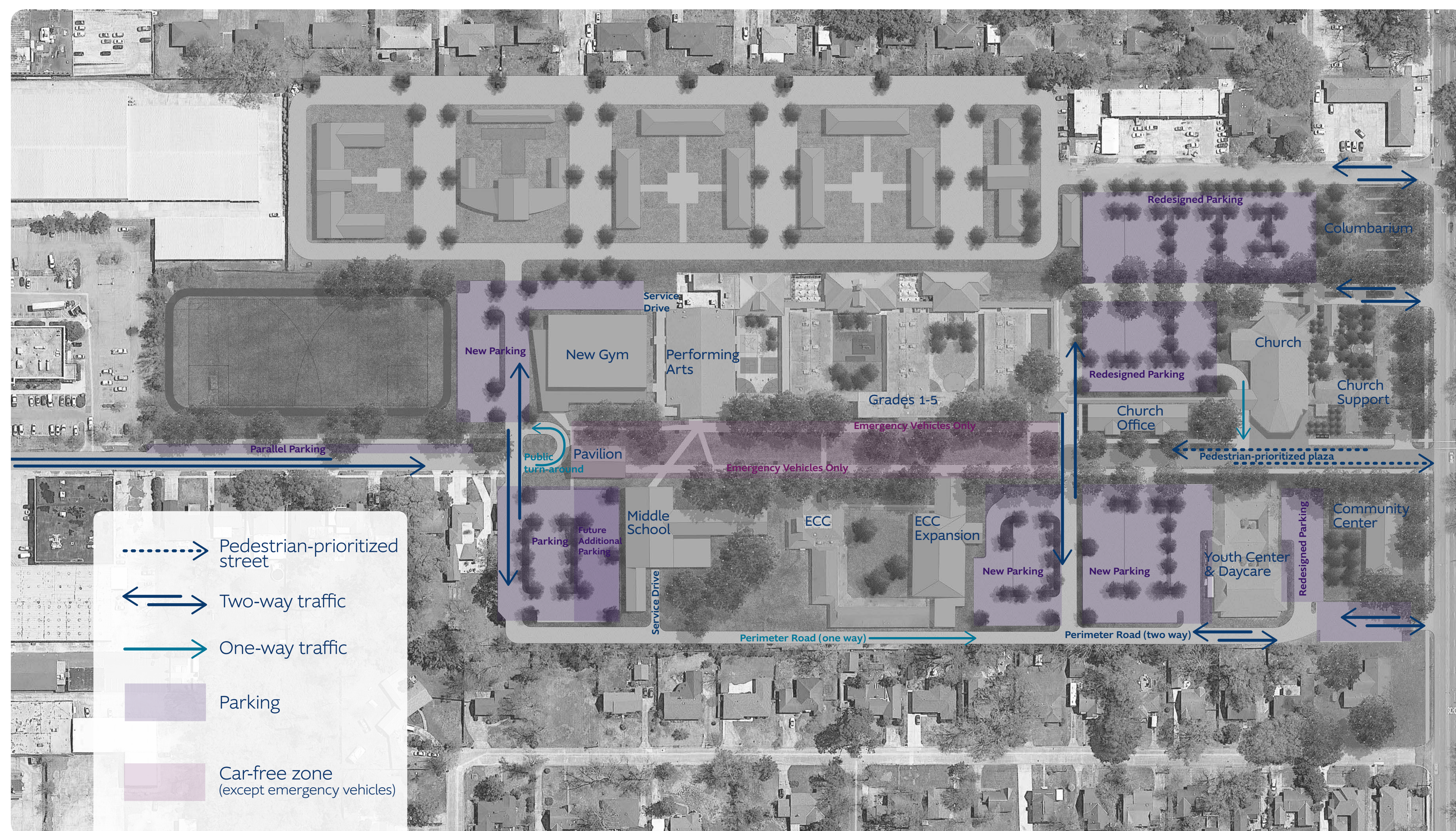
A functional and easy to understand vehicular circulation system is key to the success of the campus master plan. Accommodations have been made to get cars from one side of campus to the other easily and without endangering pedestrians. Parking lots have been redesigned or added in areas where parking was previously lacking. Existing parking lot circulation has been improved. Access to campus and the surrounding neighborhood has been improved by making a few key connections. All together, the roadways and parking lots are designed to serve the various needs of the Our Lady of Mercy community while making the campus safer for all users.

**447** Existing parking spaces

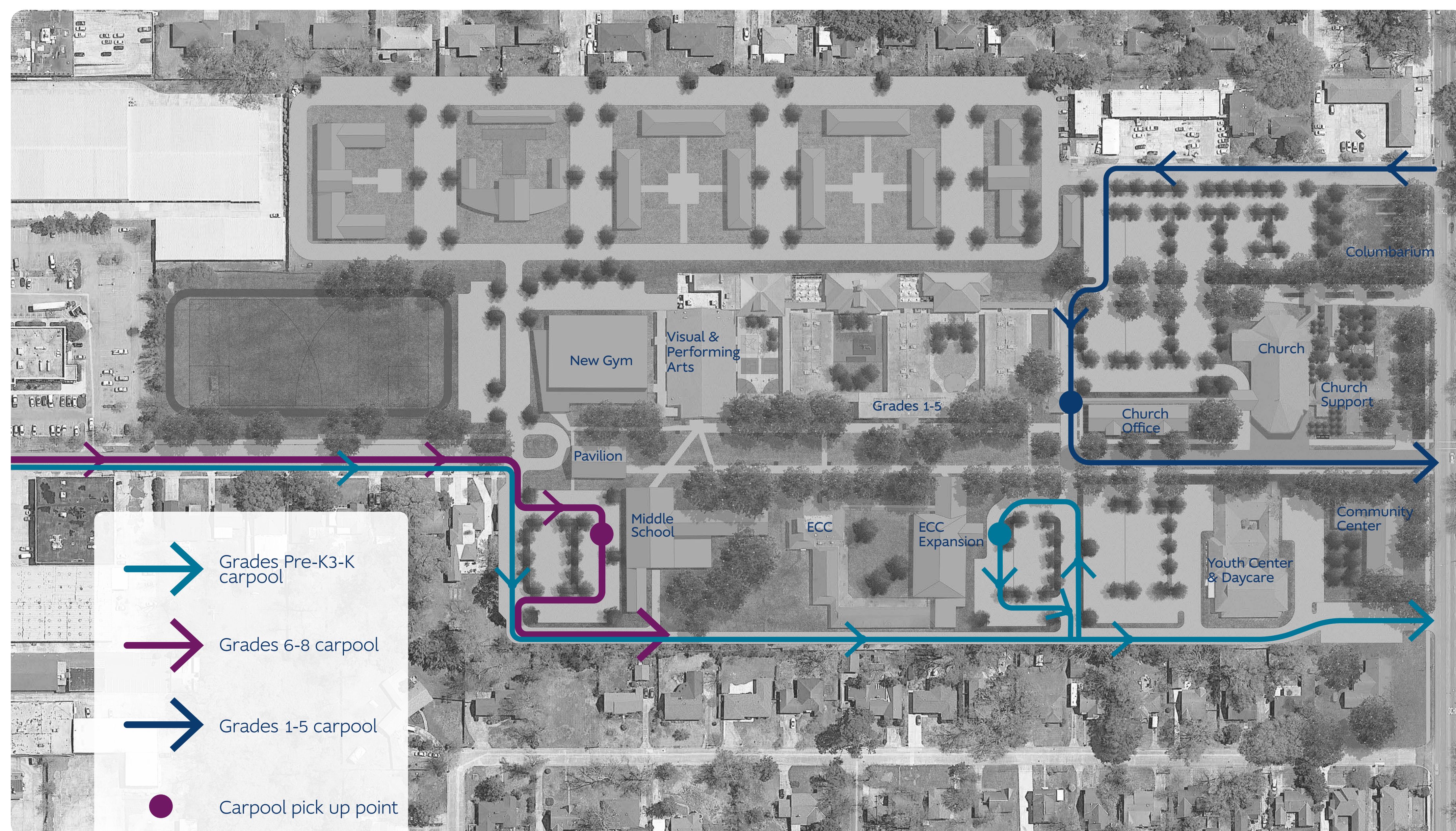
**+26** Proposed additional parking spaces

**+42** Potential additional parking spaces

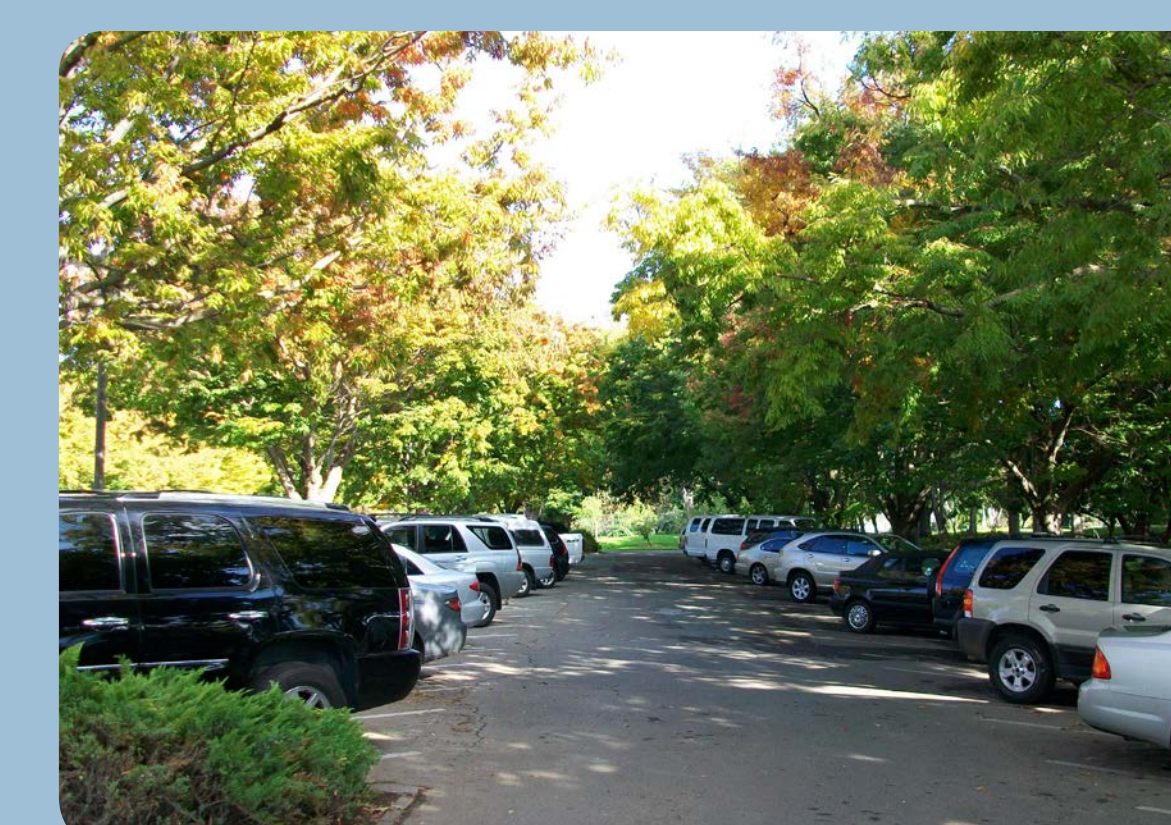
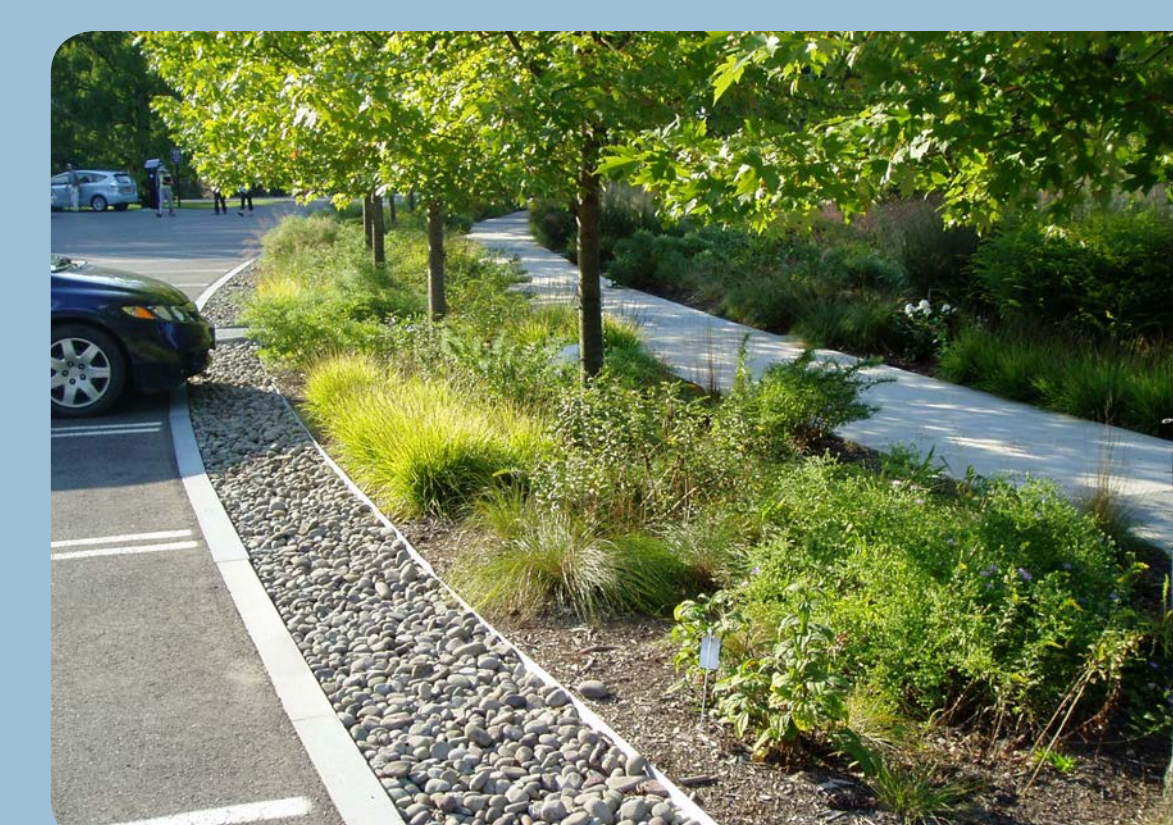
**515** Future parking spaces



ROADWAYS, ACCESS, AND PARKING



PROPOSED CARPOOL ROUTES



Parking areas and roadways should be well-designed just as open spaces and buildings are.

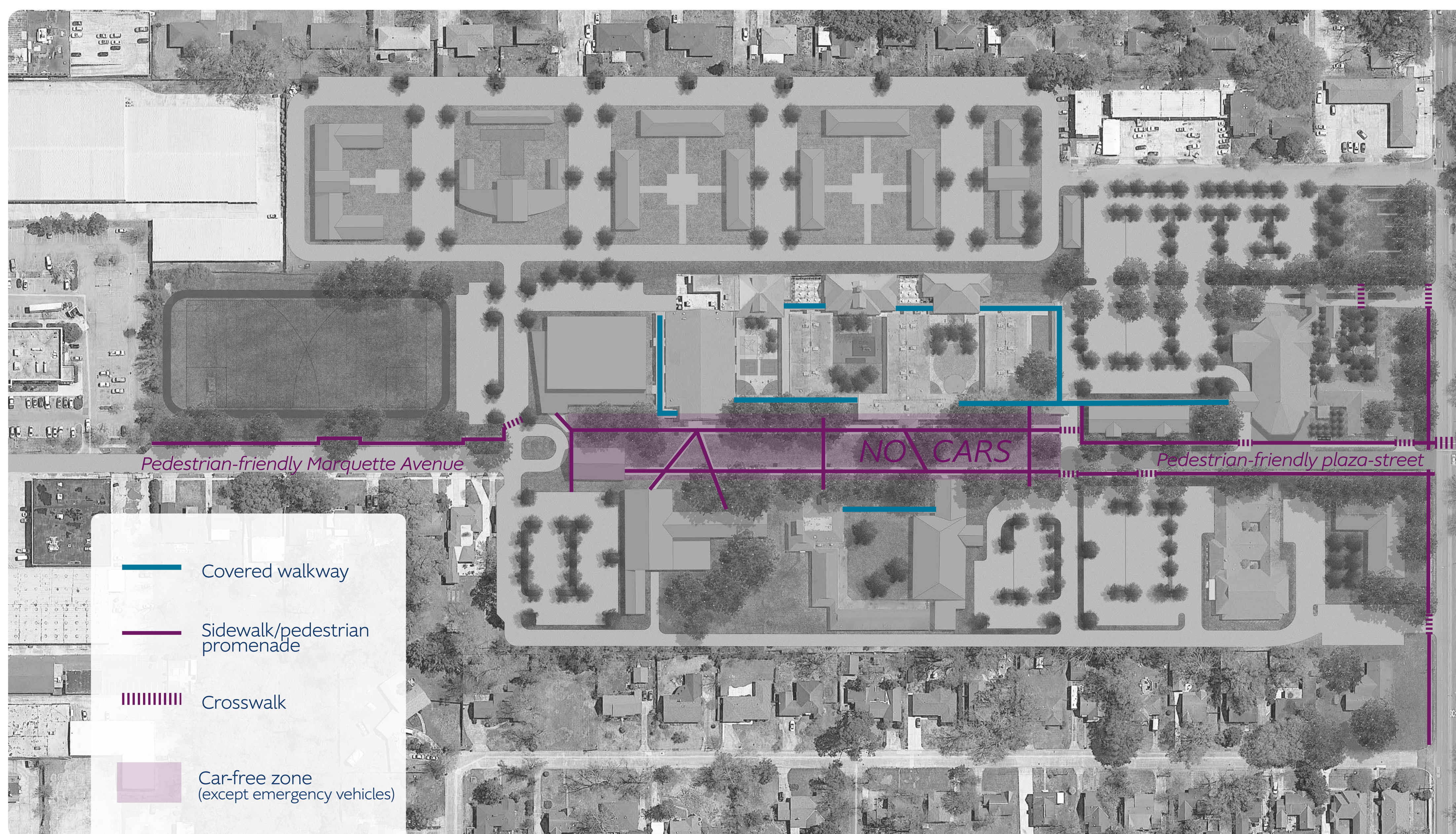
Parking lots can serve purposes other than holding cars. They can provide tree canopy and stormwater management.



## PEDESTRIAN CIRCULATION

Pedestrian safety and connectivity is a key component of the Our Lady of Mercy campus master plan. The most noticeable element of the plan is the absence of Marquette Avenue in the center of campus. Vehicles have been moved to the perimeter of campus to make it safe for pedestrians in the campus core. The new central green is for pedestrians only. The central green is complemented by wide sidewalks, covered walkways, and live oaks to connect people to buildings. A pedestrian-friendly plaza at the south end of campus near the church and Government Street is designed to give church-goers and other community members a place to safely gather while still allowing vehicles to move through campus. It also helps connect the church with the parish Activity Center.

Security on campus is also addressed in the campus master plan. A perimeter fence that encompasses the campus core keeps students and faculty safe while allowing them to move about the campus easily. The church office has been located strategically to block access across campus from Apartment Court Drive to Marquette Avenue.



### CAMPUS PEDESTRIAN REALM



### CAMPUS SECURITY



With students moving between buildings throughout the day, the campus should be well connected with a network of sidewalks.



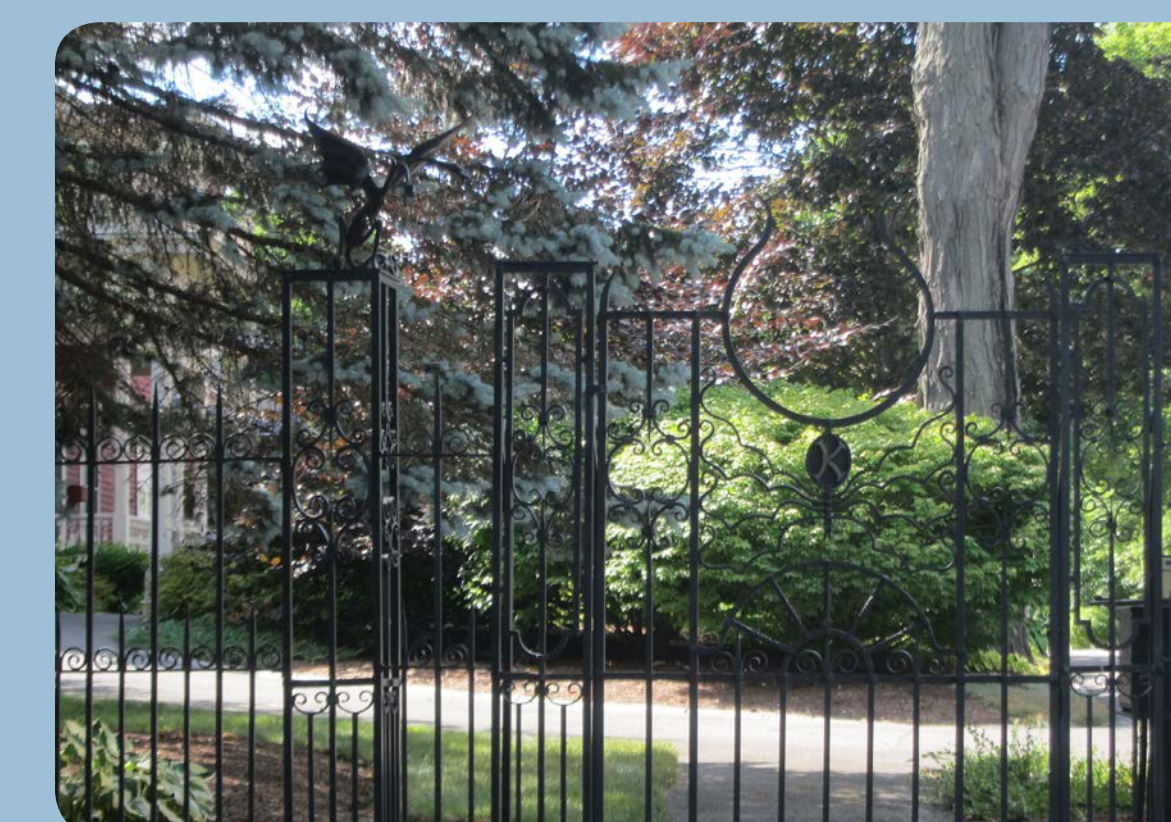
Street trees and other landscaping greatly improve the comfort and overall experience of walking around campus.



Crosswalks are necessary at any point where a sidewalk crosses traffic.



In the car-free zone of campus, pedestrian paths are designed to accommodate emergency and maintenance vehicles.

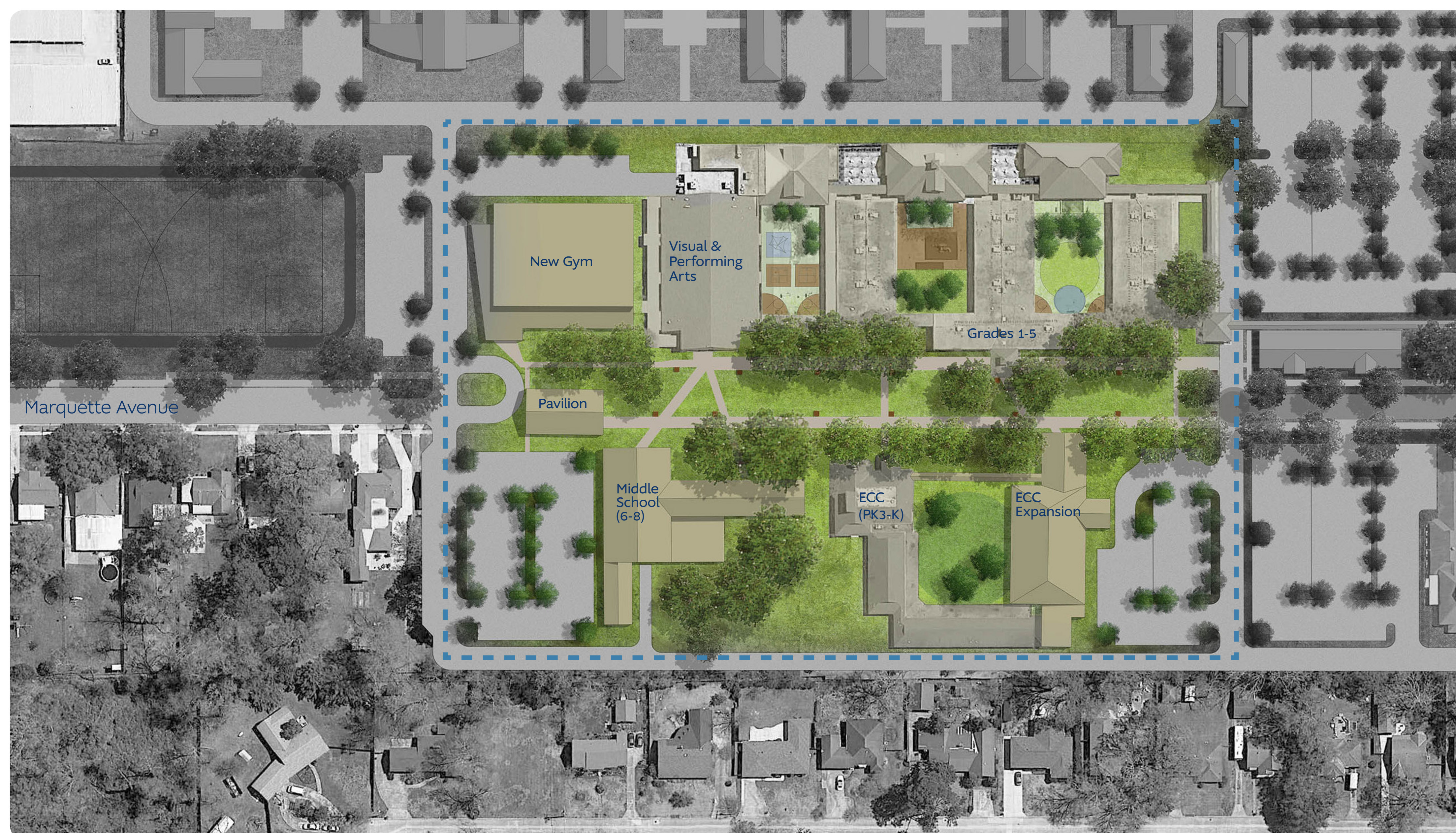


A secure campus core can be achieved with the use of fencing in key locations.



Access points into campus can be made more prominent with gates and other architectural features.

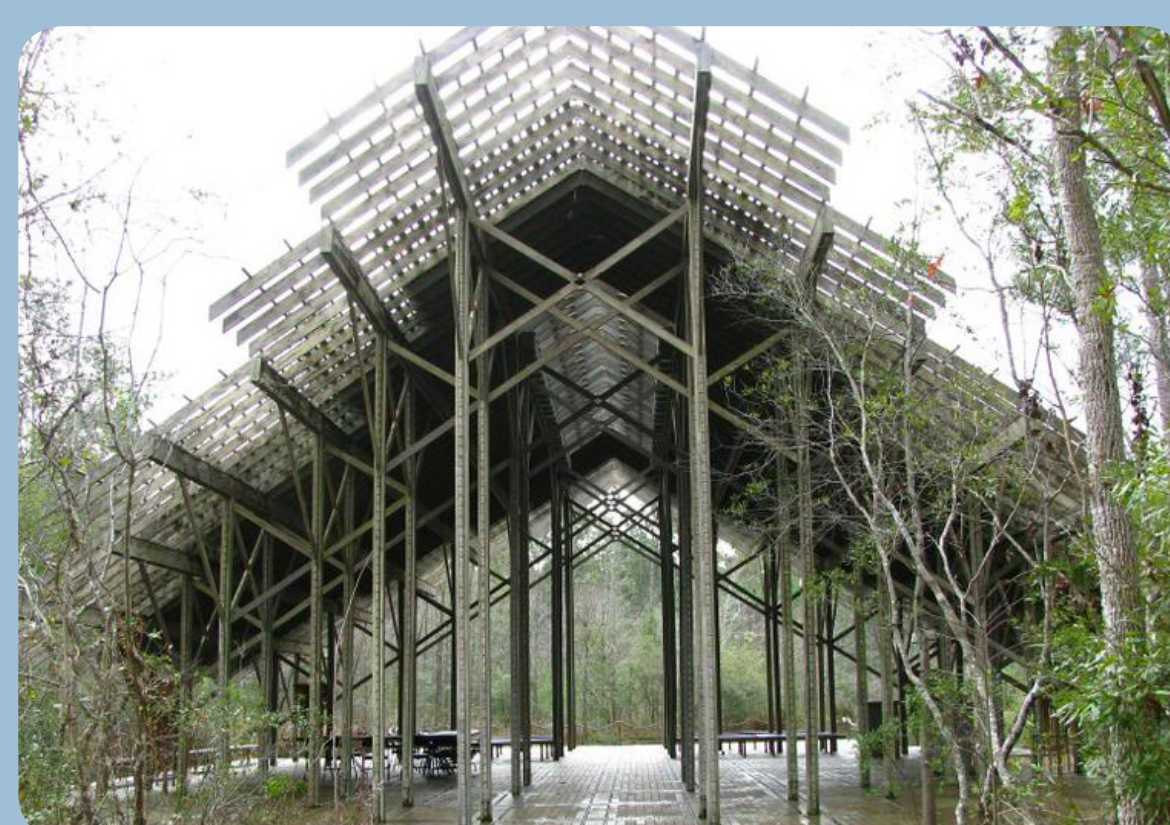




CORE SCHOOL BUILDINGS AND OPEN SPACES



OUTDOOR LEARNING AND PLAY SPACES



NEW BUILDING ARCHITECTURAL PRECEDENTS

## ACADEMIC CORE

The campus core is dedicated to the academic mission of Our Lady of Mercy. The new central green acts as an organizing element that unifies the school buildings. The proposed changes improve the safety and function of the school by creating dedicated areas for different age groups and a large gathering space that allows children to move about the campus core safely. In addition, all of the school buildings in the campus core can now be contained inside one perimeter security fence. Proposed structures include a middle school, gym, ECC expansion, and an open-air pavilion. Parking and access to buildings has been moved to the periphery of campus, making it safer for students and faculty to move around campus.

### OVERVIEW:

- additional classrooms to accommodate 4 sections of each grade
- additional space for technology and science labs, fine arts, administrative and teacher needs

### PROPOSED BUILDINGS:

#### Middle School - grades 6-8

- 2 story building
- 12-16 classrooms
- cafeteria, office, teacher space, meeting space, library, etc.

#### Gym

- 2 courts
- concessions
- locker rooms
- storage

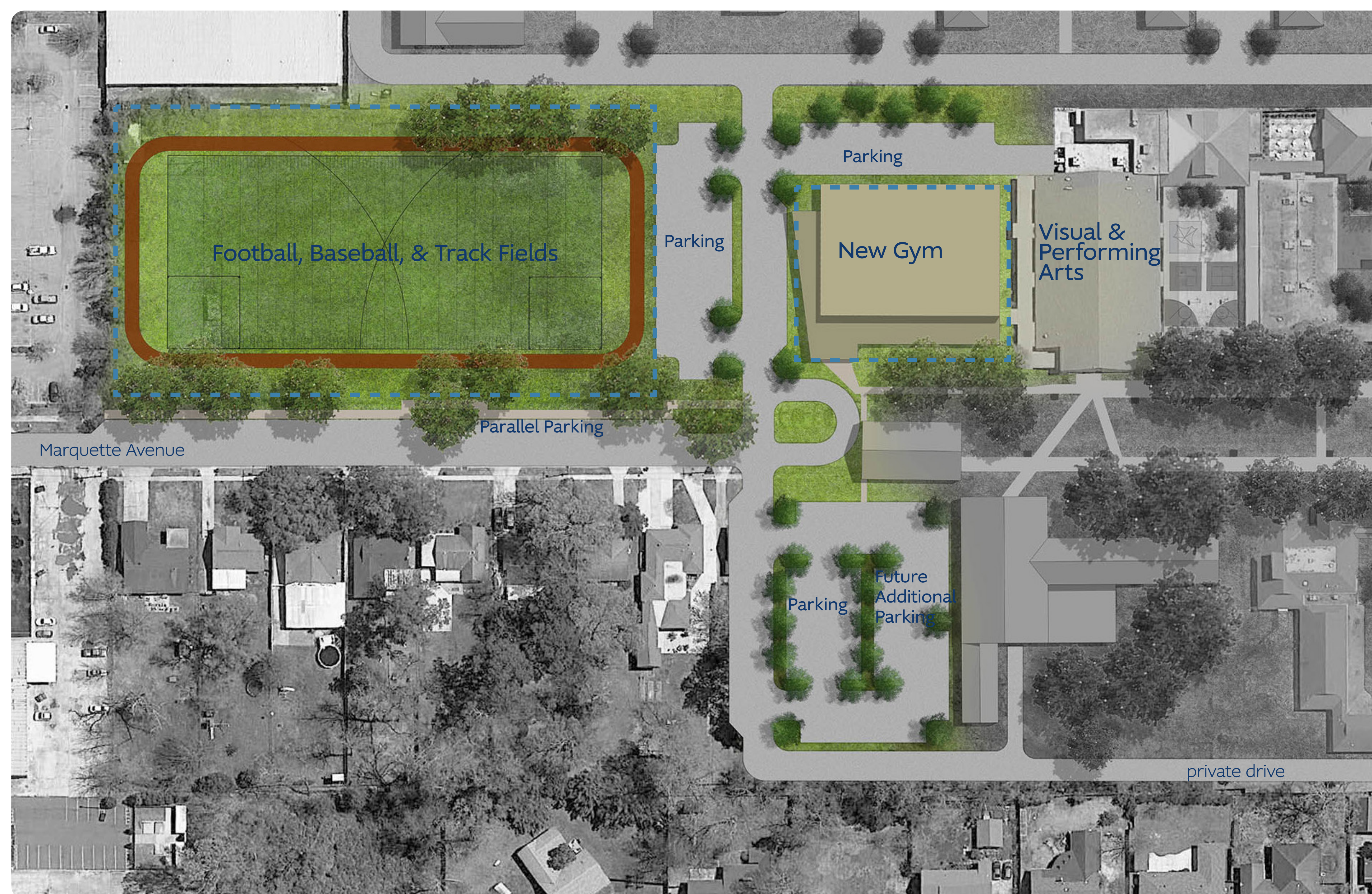
#### Early Childhood Center (ECC) - PK3, PK4, K

- 10 additional classrooms
- main school offices
- central, enclosed playground

#### Pavilion

- open air assembly space for large groups
- central green anchor





**DEDICATED ATHLETIC FACILITIES**

## PROPOSED IMPROVEMENTS:

### Gym

- 2 courts, concessions, locker rooms

### Redesigned fields

- 2 little league baseball fields
- full size football field
- 3-lane track

### Additional parking

## ATHLETIC FACILITIES

Our Lady of Mercy's numerous sports teams need dedicated space to minimize scheduling conflicts. The master plan reworks the currently underutilized multi-purpose field to provide a full size football field, two little league baseball fields, and a 3-lane track. A new, 2-court gym is proposed adjacent to the current gym. Parking for athletic events has been added near the gym and multi-purpose field. The existing on-street parking along Marquette Avenue has also been redesigned as parallel parking, which is much safer.



**Gym architectural precedents**



**Track, football and baseball fields**



## CHURCH ELEMENTS

The church is central to the mission of Our Lady of Mercy, and it is deserving of special attention in the campus plan. Proposed elements include a new covered drop-off area, columbarium, church support building, new church office building, and redesigned parking. All of these elements are tied together by Marquette Avenue, which is redesigned as a pedestrian-friendly plaza that links the church and Parish Activities Center while still accommodating vehicular traffic. The new plaza also serves as a “front porch” gathering space for the church. Stations of the Cross monuments extend the church into the new central green.

### PROPOSED BUILDINGS:

#### Church Office

- administrative offices for church
- shared church/school offices

#### Church Support

- choir room
- restrooms
- sacristy

#### Youth Center

- daycare
- youth group
- Christian education/formation
- meeting space

#### Community Center

- meeting space
- public/community ministries

#### Additional Covered Drop-off

#### Columbarium and Courtyards

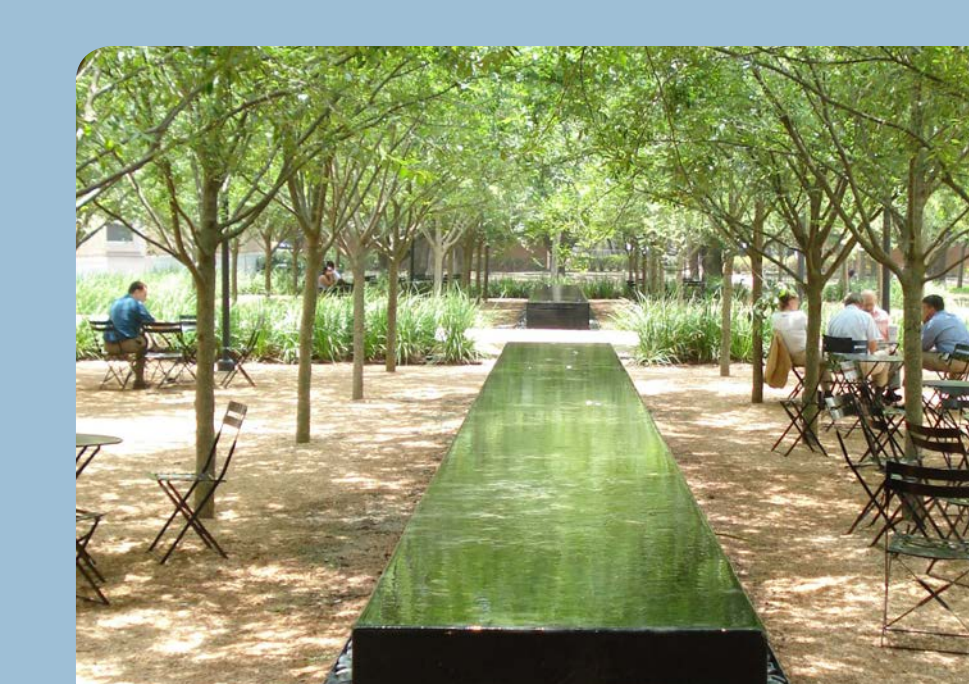
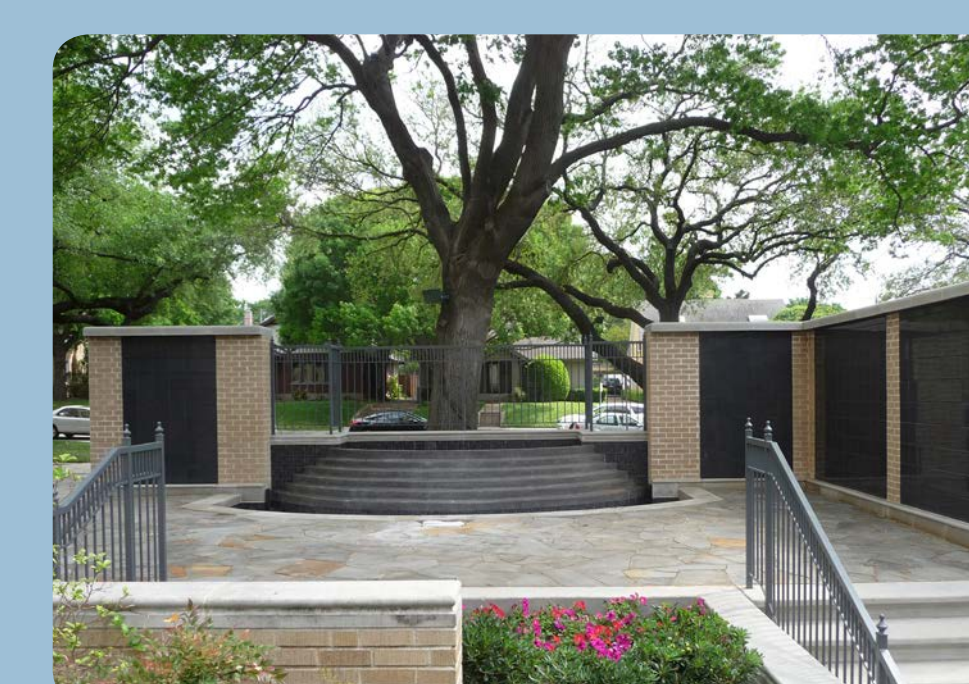


CHURCH-FOCUSED AMENITIES



VIEW OF CHURCH AND MARQUETTE PLAZA-STREET

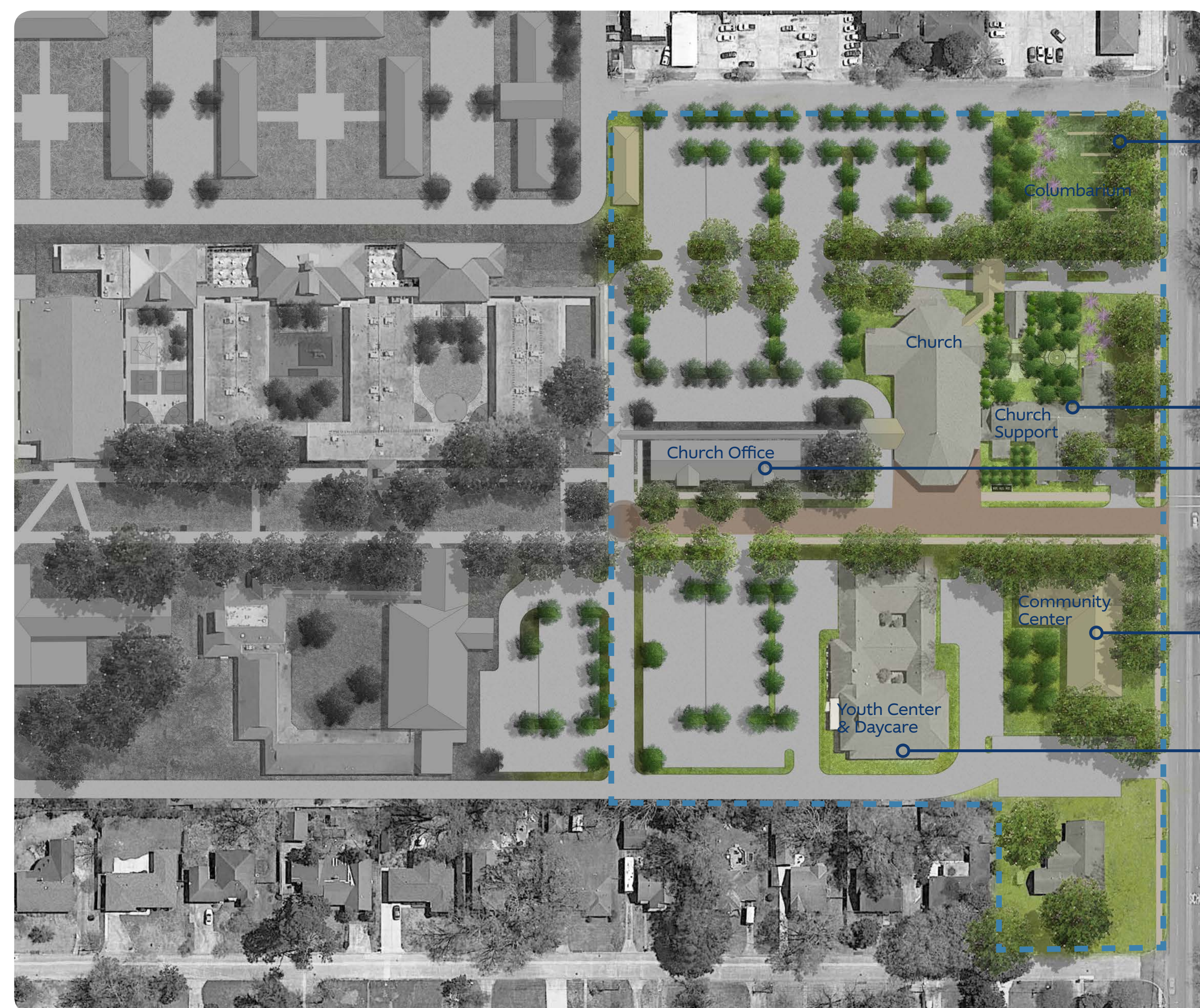
### COURTYARD INSPIRATION





## COMMUNITY ELEMENTS

One of the top priorities of the campus master plan is to create a campus that is open and welcoming to a variety of users and community members. The campus is organized so that the spaces and buildings most often used by the community are at the two ends of campus - Florida Boulevard and Government Street. This makes the public areas easily accessible, while keeping the vehicular traffic out of the campus core. At the Government Street end, the church and offices, community center, youth center, daycare, and columbarium are all easily accessible with plenty of parking nearby. At the Florida Boulevard end of campus, the athletic facilities are clustered together with additional parking nearby. Visitors to the school, which is in the center of campus, can access the school from either end.



GOVERNMENT STREET END OF CAMPUS

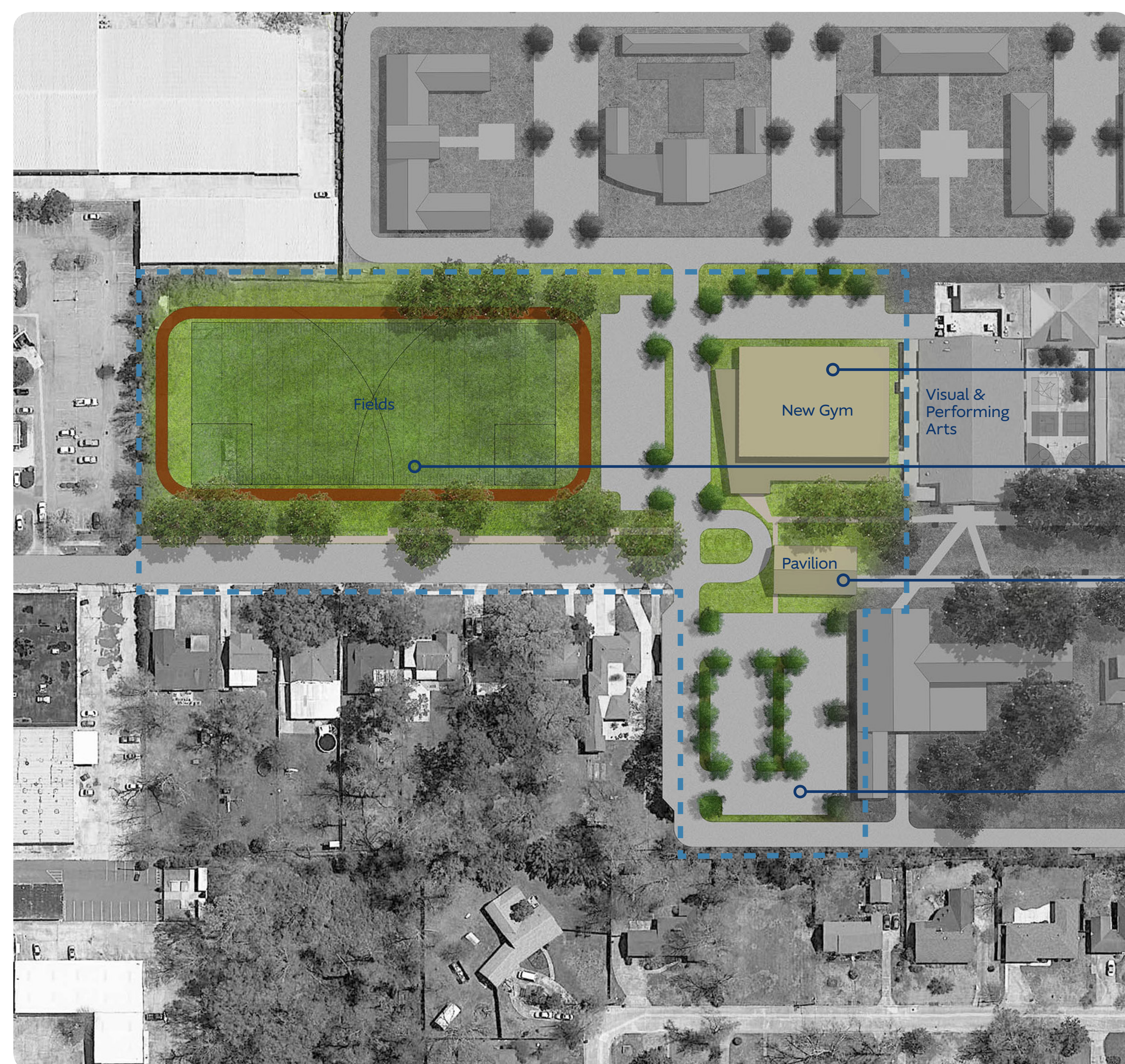
Burial sites in a peaceful garden setting

Restrooms  
Meeting space  
Choir rooms  
Sacristy  
Coffee Shop

Administrative offices

Meeting rooms  
Uses currently housed in the PAC

Current PAC converted to daycare and youth center



FLORIDA BOULEVARD END OF CAMPUS

New competition gym with 2 courts, locker rooms, concessions

New fields allow Mercy to accommodate visiting teams

Open air pavilion can accommodate large community events

New parking is accessible from Florida Blvd.

